

WARNINGS: Handle concentrate with care. Poisonous when swallowed or inhaled. May cause irritation of the skin, eyes and mucous membranes and skin sensitization. Keep out of reach of children, uninformed persons and animals. Toxic to fish, bees and wildlife. Do not spray directly onto foodstuffs or surfaces on which food is stored or eaten. Store in a cool place away from food and feedstuffs.

PRECAUTIONS: Do not use in the presence of persons with known sensitivity to pyrethroids. In the case of signs of sensitivity, obtain medical advice. Wear protective clothing when handling the concentrate or diluted solutions. Wear a face shield when applying the diluted washes to surfaces or when working in spray mist. Avoid skin contact and wash splashes from skin or eyes immediately. Wash with soap and water after use. Wash contaminated clothing daily. Do not eat, drink or smoke whilst mixing or applying or before washing face and hands. Prevent contamination of food, feedstuffs, drinking water, eating utensils and food preparation equipment. Rinse empty container three times with a volume of water equal to a minimum of 10 % of that of the container. Add the rinsings to the contents of the spray tank before destroying the container. Destroy empty container and do not re-use for any other purpose.

DIRECTIONS FOR USE: USE ONLY AS DIRECTED.

Shake well before measuring.

1. Houseflies in animal housing

Dilution: For residual treatment, dilute 80 ml **Super Suspend**[®] to 10 ℓ of water (1:125).

Application: **Super Suspend**[®] should be diluted with water only and applied with any sprayer suitable for industrial, domestic and public health use.

For residual protection apply as a coarse spray at the rate of 5 ℓ / 100 m² or to the point of run off, which will vary with the nature of the surface being treated. Since outside deposits are more likely to be exposed to weathering, shorter residual effects can be expected.

2. Cockroaches, bedbugs, fishmoths and ants

Dilution: Initial treatment for heavy infestations - dilute 80 ml **Super Suspend**[®] on 5 ℓ water. Routine treatment - dilute 40 ml / 5 ℓ water.

Application: **Super Suspend**[®] should be diluted with water only and applied with any sprayer suitable for industrial, domestic and public health use.

For residual protection apply as a coarse spray at the rate of 5 ℓ / 100 m² or to the point of run off, which will vary with the nature of the surface being treated. Spray skirtings, walls, cupboards as well as all surfaces where crawling insects are seen. Pay particular attention to cracks and crevices. For the control of ants a broad band must be sprayed around the outside of the building while active nests must also be treated.

3. Mosquitoes

Dilution: Dilute 80 - 120 ml **Super Suspend**[®] to 10 ℓ of water.

Application: Apply as a coarse spray (to the point of run off) to walls and ceilings. Use higher concentration for longer residual and on porous surfaces such as mud.

For any enquiry, contact **Bayer - 0861 022 937 (08610BAYER)**. For poisoning emergencies only, Griffon Poison Information Centre may also be contacted - 082 446 8946.

© Bayer (Pty.) Ltd. All unauthorized reproduction of this label is forbidden.
www.bayer.co.za

Batch no./Lotnommer: See container
Date manufactured/Datum vervaardig: Sien op houer

WAARSKUWINGS: Hanteer konsentraat versigtig. Giftig wanneer ingesluk of ingeasem. Kan vel, oë en slymvliese iriteer en vel sensitiseer. Hou buite bereik van kinders, oningeligte persone en diere. Giftig vir vis, bye en wild. Moenie direk op voedsel of oppervlakte waarop voedsel geberg of geëet word, spuit nie. Bewaar op 'n koel plek, weg van voedsel en voer.

VOORSORGMATREËLS: Moet nie in die teenwoordigheid van persone wie sensitief is vir piretroid, gebruik nie. In die geval van tekens van sensitiwiteit, kry mediese hulp. Dra beskermende klere wanneer die konsentraat of verdunde oplossings hanteer word. Dra 'n gesigskerm wanneer die verdunde oplossing aan oppervlakte aangewend word, of wanneer daar in die sproeimis gewerk word. Vermoë velkontak en was vel en oë onmiddellik na kontak met spatsels. Was na gebruik met seep en water. Was gekontamineerde klere daaglik. Moet nie eet, rook of drink gedurende vermenging of aanwending, of voordat hande en gesig gewas is nie. Voorkom kontaminasie van voedsel, voer, drinkwater, eetgerei en voedselvoorbereidingsgeroering. Spoel leë houër drie keer uit met 'n volume water gelykstaande aan 'n minimum van 10 % van die houër. Gooi die spoelwater by die inhoud van die spuittenk voordat die houër vernietig word. Vernietig leë houër en moet vir geen ander doel hergebruik nie.

GEBRUIKSAANWYSINGS: GEBRUIK SLEGS SOOS AANGEDUI.

Skud goed voor afgemete word.

1. Vlieë in dierhokke

Verdunning: Vir 'n lang nawerkende effek, verdun 80 ml **Super Suspend**[®] met 10 ℓ water (1:125).

Aanwending: **Super Suspend**[®] behoort slegs met water verdun te word en met enige geskikte spuit vir industriële, huishoudelike en openbare gesondheidsgebruik aangewend te word.

Vir nawerkende beskerming, wend met 'n growwe spuit aan teen 5 ℓ / 100 m² of tot net voor die punt van afloat, wat sal verskil na gelang van die tipe/soort oppervlak wat behandel word. Aangesien behandelde oppervlakte buite meer aan die weersomstandighede blootgestel is, kan korter nawerking verwag word.

2. Kakkerlakke, weeluse, vismotte en miere

Verdunning: Aanvanklike behandeling vir swaar besmettings - verdun 80 ml **Super Suspend**[®] op 5 ℓ water. Roetinebehandeling - verdun 40 ml / 5 ℓ water.

Aanwending: **Super Suspend**[®] moet slegs met water verdun en met 'n spuit geskik vir industriële geboue, huishoudelike geboue of openbare gesondheidsgebruik, aangewend word.

Vir nawerkende beskerming, wend aan as 'n growwe bespuiting teen 'n hoeveelheden van 5 ℓ / 100 m² of tot die punt van afloat, wat sal afhang van die oppervlak wat behandel word.

Besluit vloerlyste, mure, kaste asook alle oppervlakte waar kruipende insekte opgemerk word. Gee besondere aandag aan krakies en barste. Vir die beheer van miere moet 'n breë band rondom die buitekant van die gebou gespuit word terwyl aktiewe neste ook behandel moet word.

3. Muskiere

Verdunning: Verdun 80 - 120 ml **Super Suspend**[®] in 10 ℓ water.

Aanwending: Wend aan as 'n growwe bespuiting (tot die punt van afloat) aan mure en plafonne. Gebruik hoër konsentrasie vir langer nawerking asook op poreuse oppervlakte soos byvoorbeeld modder.

Vir enige navrae, skakel Bayer - **0861 022 937 (08610BAYER)**. Slegs vir vergiftigingsnoodgevallen kan Griffon Gif Inligtingsentrum ook gekontak word - 082 446 8946.

© Bayer (Edms.) Bpk. Alle ongemagtigde kopiëring van die etiket is verbode.



6 005317 000853

Bayer



Super Suspend[®]

INSECTICIDE

Reg. No. L4584 Act No. 36 of 1947
Namibian Reg. No. N-AR 1068

Before using this product read the label carefully.

A suspension concentrate containing a residual contact pyrethroid for the control of flies, mosquitoes, cockroaches, bedbugs, fishmoths and ants in animal houses, domestic and industrial premises (including food handling and processing establishments).

ACTIVE INGREDIENT:

Deltamethrin (pyrethroid).....25 g/ℓ

REGISTRATION HOLDER:

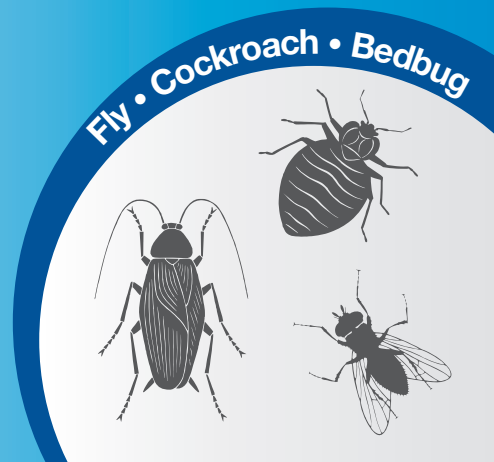
Bayer (Pty.) Ltd. Reg. No. 1968/011192/07
P.O. Box 143, ISANDHO 1600, SOUTH AFRICA
TEL: (011) 921 5911

SUSPEND[®] is a registered trademark of the Bayer Group.

UN NO. 3082

11

84130079A / 0215



CAUTION VERSIGTIG

