



Tempo[®]

EW

INSECTICIDE

Reg. No. L3174 Act No. 36 of 1947
Namibian Reg. No. N-AR 0018

Before using this product read the label carefully.

An emulsion oil in water concentrate of a pyrethroid insecticide with good knockdown and flushing action, and long lasting residual activity. Controls listed flying and crawling public health pests. Suitable for use as a residual contact spray, and in enclosed areas as a cold or hot fog.

ACTIVE INGREDIENT:

Cyfluthrin (pyrethroid).....50 g/l

REGISTRATION HOLDER:

Bayer (Pty.) Ltd.
Reg. No. 1968/011192/07
P.O. Box 143, ISANDO 1600,
SOUTH AFRICA TEL: (011) 921 5911

TEMPO[®] is a registered trademark
of the Bayer Group.

UN No. 3082

500 ml

81759480A / 0215

Ant • Cockroach • Fly



6 005317 000884



HARMFUL
SKADELIK





Tempo[®] EW

INSEKDODER

Reg. Nr. L3174 Wet Nr. 36 van 1947
Namibiese Reg. Nr. N-AR 0018

'n Piretroïede insekdoder geformuleer as 'n olie in water emulsie konsentraat met goeie uitdop- en uitdrywings- en langwerkende residuele aktiwiteite. Beheer genoemde vlieënde en kruipende publieke gesondheidsplae. Geskik vir gebruik as 'n residuele kontak toediening en as 'n koue of termiese verneweling in ingeperkte ruimtes.

AKTIEWE BESTANDEEL:

Siflutrin (piretroïed).....50 g/l

REGISTRASIEHOUER: Bayer (Edms.) Bpk.

Reg. Nr. 1968/011192/07
Posbus 143, ISANDO 1600,
SUID-AFRIKA TEL: (011) 921 5911

TEMPO[®] is 'n geregistreerde handelsmerk van die Bayer Groep.

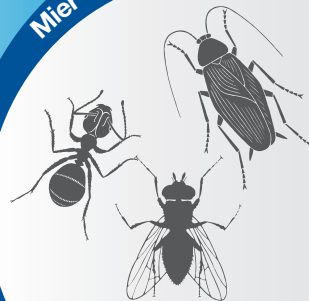
Batch no./Lotnommer: Sien op houer

Date manufactured:
Datum vervaardig: See container

VN Nr. 3082

500 ml 81759480A / 0215

Mier • Kakkerlak • Vlieg



HARMFUL
SKADELIK



WARNINGS:

Handle with care - poisonous by inhalation, contact and swallowing.

Toxic to fish, bees and wildlife.

Keep out of reach of children, animals and uninformed persons.

May cause irritation of the skin, eyes, mucous membranes and skin sensitization.

Store away from food and feedstuffs, in a safe cool place and away from direct sunlight.

In case of poisoning call a doctor and make this label available to him.

Do not apply **Tempo® EW** mixture onto or near rugs, draperies, wallpaper or materials that may easily be stained or water-marked, unless it has been proven safe on such materials.

Prior fogging, close all doors, vents and windows and keep these closed for 1 hour after application. After this period, thoroughly air premises for 1 hour before re-entering.

Note: When applied as a fog, use only in enclosed areas of approximately 100 m³ having a minimum height of 3 meters.

Note: **Tempo® EW** is not intended for use directly on grain or onto bagged commodities.

Although this remedy has been carefully tested prior to registration, the registration holder does not warrant that it will be efficacious under all conditions because the action and effect thereof may be affected by factors such as abnormal climatic and storage conditions, quality of dilution water, compatibility with other remedies not indicated on the label and the occurrence of resistance of the pest against the substance concerned, as well as by the method, time and accuracy of application. The registration holder furthermore does not accept responsibility for damage to plants, the environment, or harm to man or animal, or for lack of performance of the remedy concerned due to failure of the user to follow label instructions, or to conditions which could not have been foreseen in terms of the registration. Consult the supplier in the event of any uncertainty.

PRECAUTIONS:

Do not inhale fume spray mist. When applying as a fog, wear full protective clothing and respirator.

Do not use in the presence of persons with known sensitivity to pyrethroids.

In the case of signs of sensitivity, obtain medical advice.

Wash clothing after the days work.

Wash immediately with soap and water after accidental skin contact.

Do not eat, drink or smoke whilst mixing, applying or before washing hands and face.

Prevent contamination of food, feedstuffs, food utensils and drinking water, and do not allow to settle on surfaces with which food and feedstuffs will come into direct contact.

Prevent contamination of clothing, materials, towels, nappies, etc. which may come into direct contact with the skin.

Clean applicator after use and do not leave pesticide mixture standing in applicators overnight.

Rinse empty container three times with a volume of water equal to at least one tenth of that of the container and add the rinsings to the contents of the tank before disposing of the container in the prescribed manner.

Destroy empty container and do not re-use.

SYMPTOMS OF POISONING

Excitement, gastrointestinal discomfort, tremor, dizziness, headache, listlessness, nausea and vomiting, epigastric pain, muscular fasciculation of limbs, unconsciousness, convulsions and coma (very high doses).

FIRST AID TREATMENT

Remove patient from source of poisoning to a well-ventilated area and keep him quiet and reassured. Remove contaminated clothing and rinse contaminated body area thoroughly with plenty of soap and water. After eye contact, flush contamination out of eyes with clean water and call a doctor. If swallowed do not induce vomiting. Wash out mouth with water and call a doctor immediately.

NOTE TO PHYSICIAN

Treat symptomatically. Check blood pressure and pulse rate frequently (bradycardia and hypotonia possible). Provide supportive measures for respiratory and cardiac action. Give artificial respiration if signs of paralysis appear. Additional measures involve the elimination of the substance from the body or acceleration of its excretion (gastrolavage).

DIRECTIONS FOR USE: USE ONLY AS DIRECTED.

LONG LASTING RESIDUAL SPRAY:

Tempo® EW is an effective pyrethroid insecticide for the control of public health and household insect pests. It acts mainly as a contact poison but it also has a stomach poison action. **Tempo® EW** has good knockdown and flushing activity and long lasting residual action. The length of residual action of **Tempo® EW**, as with any insecticide depends on:

1. Insect species being controlled.
2. The dosage of insecticide used.
3. The type of surface treated (e.g. non-absorbent surfaces usually give better residual action than absorbent or porous surfaces).
4. The situation (e.g. indoors or outdoors).
5. The weather conditions (e.g. rainfall, temperature).
6. The presence of dirt, grime or dust on surfaces (e.g. application to clean surfaces give better residual control).
7. Human interference with treated surfaces (e.g. washing of treated surfaces) will remove insecticide residues, lessening residual action.

In general, however, many weeks of residual control will be obtained on surfaces, treated with 40 mℓ **Tempo® EW** / 100 m² (20 mg cyfluthrin / m²), which are not directly exposed to sun, rainfall, etc.

RECOMMENDATIONS: (Long lasting residual spray)

PEST	DOSAGE / 10 ℓ WATER	REMARKS
Cockroaches, bedbugs, fish moths, fleas, crickets	40 mℓ	SHORT TERM CONTROL: This dosage to be used in areas where lasting action is not required, e.g. for treating camp sites, refuse dumps, market places, areas regularly washed, etc. Apply using 5 - 10 ℓ spray mix / 100 m ² or until surface area to be treated is wet. Repeat when necessary.

MUSKIETNETBEHANDELING:

Muskietnette kan doeltreffend met **Tempo® EW** deurweek word om te voorkom dat muskiete deur die net byt.

Behandelde nette kan vir tot ses maande effektief bly. Nette wat gereeld 'n wasmasjien op koue siklus gewas word, moet na elke 3de - 4de was herbehandel word.

Berei die doopmengsel soos benodig voor en moet nie oormag bêre nie. Raak ontslae van oortollige doopmengsel deur dit uit te giet op die grond waar dit nie water of weiding sal besoedel nie.

AANBEVELINGS: (Muskietnetbehandeling)

Verduin 66 mℓ **Tempo® EW** in 10 ℓ vars water. Dompel die nette in die doopmengsel en los in doopmengsel vir 'n paar minute. Verwyder die net en lê uit op 'n nie-absorberende oppervlak om te droog. Ongeveer 1.5 ℓ doopmengsel is nodig vir een muskietnet.

Voorkom oormatige kontak met die doopmengsel deur rubberhandskoene te dra.

Vir enige navrae, skakel Bayer - **0861 022 937 (08610BAYER)**. Slegs vir [vergiftigingsnoodgevallen](#) kan Griffon Gif Inligtingsentrum ook gekontak word - 082 446 8946.

© Bayer (Edms.) Bpk. Alle ongemagtigde kopiëring van die etiket is verbode.

www.bayer.co.za

PLAAG	DOSIS	OPMERKINGS
Vlieënde insekte: Vlieë, muskiete	Verdun 1 deel Tempo® EW met 50 dele water (20 mℓ Tempo® EW / liter water). Gebruik 5 mℓ van mengsel / m³ lug.	Dien toe as 'n fyn newel of mis deur 'n geskikte koue of termiese vernewelaar. Indien 'n nawerking vereis word, gebruik 'n geskikte druppelgrootte om oppervlakke te benat waarop vlieënde insekte sal gaan sit (bv. glas, gevefde sement ens.). In die geval van lang lae strukture, bereken die volume lug per 10 m lengtes en dien toe elke 10 m.
Kruipende insekte: Kakkerlakke, (Amerikaanse en Duitse), weeluisse, vismotte, vlooië, miere en krieke	Verdun 1 deel Tempo® EW met 50 dele water (20 mℓ Tempo® EW / liter water). Gebruik 5 mℓ van mengsel / m³ lug.	Dien toe as 'n fyn newel of mis deur 'n koue of termiese vernewelaar wat geskik is vir die gebruik van 'n waterbasis produk. 'n Fyn newel sal krake en splete binnedring om insekte uit te dryf en te dood. 'n Mis met 'n growwer druppelgrootte sal op nie-poreuse oppervlakke (vloerlyste, gevefde oppervlakke ens.) neerslaan om 'n paar dae insekdoerende nawerking te gee. In die geval van lang lae strukture, bereken die volume lug per 10 m lengtes en herhaal toedienings elke 10 m.
Verwarde Meelkewer <i>Tribolium confusum</i>	Verdun 1 deel Tempo® EW met 50 dele water (20 mℓ Tempo® EW / liter water). Gebruik 5 mℓ van mengsel / m³ lug.	Dien toe soos aanbeveel vir bogenoemde kruipende insekte. Beperk gebruik tot leë stoorkamers.

PEST	DOSAGE / 10 ℓ WATER	REMARKS
Cockroaches, bedbugs, fish moths, fleas, crickets	60 mℓ - 80 mℓ	LASTING CONTROL: This dosage range to be used in areas where long lasting residual control is required. Thoroughly treat places where pests hide (e.g. behind skirting boards, under and behind cooking equipment, sinks, cupboards, etc.), from a short distance to the point of wetness. If pest harborages are not directly accessible, spray an insecticidal barrier onto surrounding surfaces. The higher dosage (80 mℓ) should be used where infestations are severe or where longer intervals between spray applications are required. Repeat application when necessary.
Ants	40 mℓ 60 mℓ - 80 mℓ	OUTDOORS: Apply as a drench into nests or spray directly onto foraging individuals. Repeat when necessary. INDOORS: Apply as a residual spray to surfaces regularly criss-crossed by ants. The higher dosage (80 mℓ) should be used where infestations are severe or where longer intervals between spray applications are required. Repeat when necessary.
Flies	40 mℓ	SHORT TERM CONTROL: This dosage to be used in areas where lasting action is not required, e.g. for treating camp sites, refuse dumps, market places, areas regularly washed, etc. Apply using 5 - 10 ℓ spray mix / 100 m² or until surface area to be treated is wet. Repeat when necessary.

PEST	DOSAGE / 10 ℓ WATER	REMARKS
Flies	60 mℓ - 80 mℓ	<p>LASTING CONTROL: This dosage range to be used in areas where long lasting residual control is required. Spray surfaces where flies settle, e.g. windows, window sills, near rubbish bins, etc., until the point of wetness. The higher dosage (80 mℓ) should be used where infestations are severe or where longer intervals between spray applications are required. Repeat application when necessary.</p> <p>NOTE: To enhance efficacy against flies by making use of the stomach poison action of Tempo® EW and to encourage flies to settle and feed on treated surfaces, add 250 g sugar or molasses / 10 ℓ spray mix.</p>
Mosquitoes	40 mℓ 60 mℓ - 80 mℓ	<p>SHORT TERM CONTROL: This dosage to be used in areas where lasting action is not required, e.g. for treating camp sites, refuse dumps, market places, areas regularly washed, etc. Apply using 5 - 10 ℓ spray mix / 100 m² or until surface area to be treated is wet. Repeat when necessary.</p> <p>LASTING CONTROL: This dosage range to be used in areas where long lasting residual control is required. Spray surfaces where mosquitoes settle, e.g. dark corners, behind cupboards, under beds, etc., until the point of wetness. The higher dosage (80 mℓ) should be used where infestations are severe or where longer intervals between spray applications are required. Repeat application when necessary.</p>

BELANGRIK: Skud **Tempo® EW** baie deeglik elke keer voordat 'n nuwe spuitmengsel voorberei word.

KOU EN TERMIESE VERNEWELING:

Tempo® EW is 'n effektiewe insekdoder met 'n kontak- en maag vergiftigingswerking, wat as 'n bespuiting of as 'n koue of termiese verneweling toege dien kan word met geskikte toedieners. Dit kan gebruik word as 'n neweltoediening vir die beheer van genoemde vlieënde en kruipende publieke gesondheidsplae teenwoordig in huise, hospitale, hotelle, skole, barakke, skepe, vliegtuie, voedselprossesering- en voedselverpakkingsfabrieke, kommersiële en industriële instansies, rioolstelsels, ens.

Aangesien **Tempo® EW** 'n waterbasis konsentraat is, en met water verdun moet word vir gebruik in 'n vernewelingsapparaat, is dit nie vlambaar nie, reukloos, en word vlek- en watermerke tot die minimum beperk (sien Waarskuwings). Tydens termiese verneweling is die korrekte kalibrasie essensieel (konsentrasie / m³ lug), aangesien die druppels moeilik waarneembaar is. Verneweling met 'n waterbasismiddel, produseer relatiewe groot druppels. Die resultaat hiervan is dat druppels binne 'n kort tyd afsak en word die gebruik aanbeveel slegs vir ruimtes van ongeveer 100 m³ (6 m x 6 m x 3 m hoog), of in rioolstelsels waar herhaalde toedienings 10 m uitmekaar gespasieer moet word.

In die geval waar 'n aanvullende kontakbespuiting benodig word, moet die toediening soos vir 'Langwerkende residuele toediening' gevolg word. Neweldruppels wat egter op nie-poreuse oppervlakke (bv. glas, gevefde sement, vlekvrystaal, ens.) neerslaan, sal insekdodende aktiwiteit vir verskeie dae daarna behou.

AANBEVELINGS: (Koue en termiese verneweling)

Volg die vervaardigers se instruksies van vernewelingsapparaat sorgvuldig en gebruik slegs toedieners wat ontwerp is vir die gebruik van waterbasis formulasie.

PLAAG	DOSIS / 10 ℓ WATER	OPMERKINGS
Vlieë	60 mℓ - 80 mℓ	<p>LANG RESIDUELE BEHEER: Gebruik die dosis waar lang nawerking verlang word. Behandel die areas waar vlieë kom sit, bv. vensters, vensterrame, naby asblikke, ens. Dien toe tot die punt van benatting. Gebruik die hoër dosis (80 mℓ) onder hoë infestasiedruk of waar langer periodes van beheer tussen toedienings verlang word. Herhaal wanneer nodig.</p> <p>NOTA: Deur suiker of molasse teen 250 g / 10 ℓ spuitmengsel te voeg kan die maaggif eienskap van Tempo® EW beter benut word aangesien dit vlieë sal aanmoedig om op die oppervlakte te sit en te voed.</p>
Muskiete	40 mℓ 60 mℓ - 80 mℓ	<p>KORT TERMYN BEHEER: Gebruik die dosis in areas waar lang nawerking nie benodig word nie bv. die behandeling van kampeerterreine, vuilgoedhope, markstalletjies, oppervlakte wat gereeld gewas word ens. Dien 5 - 10 ℓ spuitmengsel / 100 m² toe, of tot die punt van benatting. Herhaal wanneer nodig.</p> <p>LANG TERMYN BEHEER: Gebruik die dosis waar lang nawerking verlang word. Dien toe op oppervlakte waar muskiete gewoonlik sit, bv. donker hoeke, agter kaste, onder beddens, ens. Dien toe tot die punt van benatting. Gebruik die hoër dosis (80 mℓ) onder hoë infestasiedruk of waar langer periodes van beheer tussen toedienings verlang word. Herhaal wanneer nodig.</p>

IMPORTANT: Shake **Tempo® EW** well each and every time before mixing with water.

COLD OR THERMAL FOG:

Tempo® EW is a contact and stomach insecticide which, apart from its use as a contact spray, can also be used as a cold or thermal fog in suitable applicators. It can be used as a fog to control the listed flying and crawling public health pests found in homes, hospitals, hotels, schools, barracks, ships, aircrafts, food processing and handling establishments, commercial and industrial establishments, sewers, etc.

As **Tempo® EW** is a water-based concentrate which is further diluted with water prior to use in a fogger, it is non-flammable and odourless, and staining problems are minimised (see Warnings). When used as a thermal fog, visible smoke or droplets are not necessarily observed, so care must be taken to correctly calibrate the fogger so as to obtain the correct concentration / m³. In addition, water-based fogging solutions generate particles which are relatively large in size. This means that they settle within a short period of time and are recommended only for use in rooms of approximately 100 m² (6 m x 6 m x 3 m high), or in sewers where repeat applications would be required at distances of 10 m.

When the use of a residual contact spray is required to supplement fogger treatments, the application method as for 'Long lasting residual spray' should be followed. However, it should be remembered that droplets settling onto non-porous surfaces (e.g. glass, painted walls, stainless steel, etc.), will have insecticidal activity for several days.

RECOMMENDATIONS: (Cold or thermal fog)

Follow manufacturers' instructions on fogging equipment and only use equipment designed for use with water-based formulations.

PEST	DOSAGE	REMARKS
Flying insects: Flies, mosquitoes	Dilute 1 part Tempo® EW with 50 parts water (20 mℓ Tempo® EW / liter water). Use 5 mℓ of this mixture / m ³ air	Disperse as a fine fog or mist through suitable hot or cold foggers. Should a few days residual action be required, use particle size large enough to moisten surfaces on which flying insects may settle (e.g. glass, painted cement etc.). In the case of long, low structures, calculate volume of air in 10 m intervals and apply required amount every 10 m.

PEST	DOSAGE	REMARKS
Crawling insects: Cockroaches (American and German), bedbugs, fishmoths, fleas, ants and crickets	Dilute 1 part Tempo® EW with 50 parts water (20 mℓ Tempo® EW / liter water). Use 5 mℓ of this mixture / m³ air	Disperse as a fine mist through hot or cold foggers which can be used with water-based products. A very fine mist of fog will penetrate into cracks and crevices, flushing out the insects and killing them. A coarse mist will settle on surfaces giving a few days residual control on non-porous surfaces (skirting boards, painted surfaces, etc.). In the case of long low structures (e.g. sewers) calculate the volume of air in 10 m intervals and apply required amount every 10 m.
Confused Flour Beetle <i>Tribolium confusum</i>	Dilute 1 part Tempo® EW with 50 parts water (20 mℓ Tempo® EW / liter water). Use 5 mℓ of this mixture / m³ air	Apply as directed for above crawling insects. Only use in empty store rooms.

MOSQUITO NET TREATMENT:

Tempo® EW is an effective mosquito net impregnant which prevents mosquitoes from biting through the net.

Treated nets can be expected to remain effective for up to six months. If the nets are washed regularly on cold cycle in washing machine, it should be retreated after the 3rd - 4th wash.

Prepare the dipwash as required and do not store overnight. Excess dipwash should be poured into the ground where it will not contaminate water or grazing.

PLAAG	DOSIS / 10 ℓ WATER	OPMERKINGS
Kakkerlakke, weeluisse, vismotte, vlooië, krieke	60 mℓ - 80 mℓ	LANG TERMYN BEHEER: Gebruik die dosis waar lang nawerking verlang word. Behandel die areas waar insekte skuil, (bv. agter vloerlyste, onder en agter kooktoerusting, wasbakke, kaste ens.) deeglik. Spuit vanaf 'n kort afstand tot die punt van benatting. Indien die insek wegkruipplekke nie toeganklik is vir direkte toediening nie, spuit die insekdoder as 'n versperring om hulle wegkruipplekke. Gebruik die hoër dosis (80 mℓ) onder hoë infestasiedruk of waar langer periodes van beheer tussen toedienings verlang word. Herhaal wanneer nodig.
Miere	40 mℓ 60 mℓ - 80 mℓ	BUITENSHUIS: Dien toe as 'n loging in gate en neste, of spuit direk op die miere. Herhaal wanneer nodig. BINNENSHUIS: Dien toe as 'n residuele bespuiting op oppervlakte waaroor miere loop. Die hoër dosis (80 mℓ) word aanbeveel vir hoë infestasiedruk en waar langer periodes van beheer tussen toedienings verlang word. Herhaal wanneer nodig.
Vlieë	40 mℓ	KORT TERMYN BEHEER: Gebruik die dosis waar lang residuele nawerking nie verlang word nie, bv. die behandeling van kampeerterreine, vuilgoedhope, markstalletjies, oppervlakte wat gereeld gewas word, ens. Dien 5-10 ℓ spuitmengsel / 100 m² toe, of tot die punt van benatting. Herhaal wanneer nodig.

LANGWERKENDE RESIDUELE TOEDIENING:

Tempo® EW is 'n effektiewe piretroïed insekdoder vir die beheer van publieke gesondheid en huishoudelike insekteplae. Dit funksioneer hoofsaaklik as 'n kontakgif, maar het ook 'n maaggifwerking. **Tempo® EW** het goeie uitklop- en uitdrywingsaksies en lang nawerking. Die tydperk van nawerking van **Tempo® EW** hang af, soos met enige ander insekdoder van:

1. Die insekspesie wat beheer moet word.
2. Die toedieningsdosis.
3. Die tipe oppervlak wat behandel word (bv. nie-poreuse oppervlakke is beter as poreuse oppervlakke, vir die lang nawerking van insekdoders).
4. Die plek van toediening (bv. binnens- of buitenshuis).
5. Die weersomstandighede (bv. reënval, temperatuur).
6. Die teenwoordigheid van stof en vuiligheid op oppervlakke (bv. toediening op skoon oppervlakke gee langer nawerking).
7. Die menslike bedrywighede op die behandelde oppervlakke, (bv. was van oppervlakke) sal die insekdoder-residu verwyder en nawerking verminder.

In die algemeen kan 'n paar weke nawerking van **Tempo® EW**, toegedien teen 40 mℓ / 100 m² (20 mg siflutrin / m²) ver wag word indien dit nie direk aan sonlig, reënval ens. blootgestel word nie.

AANBEVELINGS: (Langwerkende residuele toediening)

PLAAG	DOSIS / 10 ℓ WATER	OPMERKINGS
Kakkerlakke, weeluse, vismotte, vlooië, krieke	40 mℓ	KORT TERMYN BEHEER: Gebruik die dosis waar lang nawerking nie benodig word nie, bv. die behandeling van kampeerterreine, vuilgoedhope, markstalletjies en oppervlakke wat gereeld gewas word. Dien 5-10 ℓ spuitmengsel / 100 m ² toe, of tot die punt van benatting. Herhaal wanneer nodig.

RECOMMENDATIONS: (Mosquito net treatment)

Dilute 66 mℓ **Tempo® EW** with 10 ℓ of fresh water. Place the net in the dipwash and allow to stand for a few minutes. Remove the net and place on a non-absorbent surface to dry.

Approximately 1,5 ℓ of dipwash is required per mosquito net.

Avoid excessive contact with the dipwash by wearing rubber gloves.

For any enquiry, contact Bayer - **0861 022 937 (08610BAYER)**. For poisoning emergencies only, Griffon Poison Information Centre may also be contacted - 082 446 8946.

© Bayer (Pty.) Ltd. All unauthorized reproduction of this label is forbidden.

www.bayer.co.za

WAARSKUWINGS:

Hanteer versigtig - giftig wanneer ingesluk, ingesam of deur die vel geabsorbeer word.

Giftig vir vis, bye en wild.

Hou buite bereik van kinders, diere en oningeligte persone.

Kan vel, oë en slymvliese irriteer en vel sensitiseer.

Bewaar in 'n koel plek weg van direkte sonlig, voedsel en voer.

Ingeval van vergiftiging ontbied 'n geneesheer en maak hierdie etiket aan hom beskikbaar.

Moet nie **Tempo® EW** spuitmengsels op matte, tapyte, behangself, muurpapier of soortgelyke stowwe wat moontlik kan vlek of watermerke maak, spuit nie, tensy dit as veilig op sulke stowwe bewys is.

Voor verneweling maak alle vensters, deure en ventilasie-opeeninge deeglik toe, en hou toe vir 1 uur daarna. Deurlug die vertrek vir 1 uur voordat dit weer vir gebruik binnegegaan word.

Opmerking: Beperk die gebruik van **Tempo® EW** wanneer dit vernewel word, tot geslote ruimtes van ongeveer 100 m³ met 'n maksimum dakhoogte van 3 meter.

Opmerking: **Tempo® EW** word nie aanbeveel vir direkte toediening op graan of verpakte graan nie.

Alhoewel hierdie middel omvattend getoets is voor registrasie, waarborg die registrasiehouer nie dat dit onder alle toestande doeltreffend sal wees nie, aangesien die werking en effek daarvan beïnvloed kan word deur faktore soos abnormale klimaats- en bergingstoestande, kwaliteit van verdunningswater, verenigbaarheid met ander middels wat nie op die etiket aangedui is nie en die voorkoms van weerstand van die plaag teen die betrokke middel sowel as die metode, tydsberekening en akkuraatheid van toediening. Verder aanvaar die registrasiehouer nie verantwoordelikheid vir skade aan plantegroei, die omgewing of vir nadelige effek op mens of diër of vir 'n gebrek aan prestasie as gevolg van die versuim van die gebruiker om etiketaanwysings na te kom of as gevolg van die ontstaan van toestande wat nie kragtens die registrasie voorsien kon word nie.

VOORSORGMATREËLS:

Vermyn inaseming van spuitnewels.

Maak gebruik van volledige beskermende klere en respirator tydens verneweling.

Was klere daaglik na toediening.

Was onmiddellik met seep en water na toevallige velkontak.

Moet nie in die teenwoordigheid van persone wie sensitief is vir piretroïede, gebruik nie.

In die geval van tekens van sensitiwiteit, kry mediese hulp.

Moenie eet, drink of rook tydens vermenging en toediening voordat hande en gesig gewas is nie.

Voorkom besoedeling van voedsel, eetgerei, veevoer en drinkwater.

Voorkom neerslag op oppervlakke waarmee voedsel of veevoer direk in aanraking kom.

Voorkom kontaminasie van klere, materiale, handdoeke, doeke, ens. wat direk in aanraking met die vel sal kom.

Was en reinig die toediener na gebruik. Moet nie die spuitmengsel oornag in die toediener laat staan nie.

Spoel houër drie keer uit met 'n volume water gelykstaande aan 'n minimum van 10 % van die houër. Gooi spoelwater by die inhoud van spuittekn voordat die houër op die voorgeskrewe wyse vernietig word.

Vernietig leë houër en moet vir geen doel weer gebruik nie.

SIMPTOME VAN VERGIFTIGING

Angstigheit, spysverteringskanaal ongemak, rillings, duiseligheit, hoofpyn, lusteloosheit, naarheit en braking, maagpyn, spier fassikulasie van ledemate, bewusteloosheit, stuiptrekkings en koma (baie hoë dosisse).

EERSTEHULP BEHANDELING

Verwyder pasiënt van die bron van vergiftiging na 'n goed geventileerde omgewing en hou hom kalm en gerusstel. Verwyder besoedelde klere en spoel die besmette liggaamsdele deeglik met baie seep en koue water af. Na oogkontak, spoel besmette oë uit met skoon water en kontak 'n geneesheer. Indien ingesluk, moenie braking induuseer nie. Spoel mond met water uit en kontak 'n geneesheer onmiddellik.

NOTA AAN GENEESHEER

Behandel simptome. Monitor bloeddruk en polsslag (hartvertraging en hipotonie kan voorkom) en gee kunsmatige asemhaling indien verlamming intree. Maatreëls soos maagspoeling om die gif uit die liggaam te verwyder kan gebruik word.

GEBRUIKSAANWYSINGS: GEBRUIK SLEGS SOOS AANGEDUI.