

Insects Controlled

Aphids on roses

Conifer aphid

Mole crickets
(*Gryllotalpa africana*)

Rove beetle
(*Neosorius brevipennis*)

White grubs
(*Scarabaeidae*)

Ants

For any enquiry, contact Bayer - **0861 022 937 (08610BAYER)**. For poisoning emergencies only, Griffon Poison Information Centre may also be contacted - 082 446 8946.

© Bayer (Pty.) Ltd. All unauthorized reproduction of this label is forbidden.
www.bayer.co.za

Batch no.: See container
Date manufactured: See container

Bayer



Merit[®] 200 SC

INSECTICIDE

Reg. No. L8020 Act No. 36 of 1947
Namibian Reg. No. N-AR 0900
Botswana Reg. No. W130051 of Act No. 18 of 1999

Before using this product read the label carefully.
For full particulars see enclosed pamphlet.

A systemic suspension concentrate insecticide for the control of aphids on roses, conifer aphids, mole crickets, rove beetles, first and second instar white grubs and ants.

ACTIVE INGREDIENT:
Imidacloprid (chloro-nicotinyl)..... 200 g/l
Insecticide group code..... 4A

REGISTRATION HOLDER:
Bayer (Pty.) Ltd. Reg. No. 1968/011192/07
P.O. Box 143, ISANDO 1600, SOUTH AFRICA
TEL: (011) 921 5911

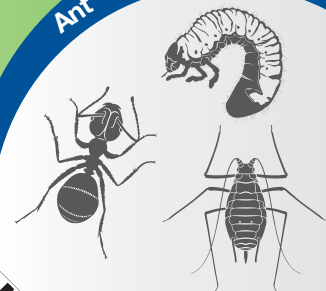
MERIT[®] is a registered trademark of the Bayer Group.

UN No. 3351

11

80966059B / 1214

Ant • Aphid • White Grub



HARMFUL





Merit[®] 200 SC

INSECTICIDE

Reg. No. L8020, Act No. 36 of 1947
Namibian Reg. No. N-AR 0900
Botswana Reg. No. W130051 of Act No. 18 of 1999

A systemic suspension concentrate insecticide for the control of aphids on roses, conifer aphids, mole crickets, rove beetles, first and second instar white grubs and ants.

ACTIVE INGREDIENT:

Imidacloprid (chloro-nicotinyl) 200 g/l

Insecticide group code: 4A

REGISTRATION HOLDER:

Bayer (Pty.) Ltd.
Reg. No. 1968/011192/07
P.O. Box 143, ISANDO, 1600
SOUTH AFRICA
TEL: (011) 921 5911

MERIT[®] is a registered trademark of the Bayer Group.



HARMFUL

WARNINGS:

Handle with care.
Poisonous when absorbed through the skin or swallowed or inhaled.
Toxic to fish and wildlife.
Store in a cool place away from food and feedstuffs.
Keep out of reach of children, uninformed persons and animals.
In case of poisoning call a doctor and make this label available to him.

PRECAUTIONS:

Do not inhale fumes.
Wash contaminated clothing daily.
Wash with soap and water after use or accidental skin contact.
Do not eat, drink or smoke whilst mixing, applying or before washing hands and face.
Clean applicator after use, dispose of wash water where it will not contaminate crops, grazing, rivers and dams.
Rinse empty container three times with a volume of water equal to at least one tenth of that of the container and add the rinsings to the contents of the tank before disposing of the container in the prescribed manner.
Destroy empty container by perforation and flattening and never use for any other purpose.
Prevent contamination of food, feedstuffs, drinking water and eating utensils.

SYMPTOMS OF POISONING:

Apathetic state, depressed muscular tone, respiratory disturbances and trembling and muscular cramps in severe cases of poisoning.

FIRST AID AND TREATMENT:

Remove patient from source of poisoning (to well ventilated area) and keep him quiet and reassured. Remove contaminated clothing and rinse contaminated body area thoroughly with plenty of soap and cold water. After eye contact, flush contamination out of eyes with clean water and call a doctor. If swallowed do not induce vomiting. Wash out mouth with water and call a doctor immediately.

NOTE TO PHYSICIAN:

Treat symptomatically. Monitoring of respiratory and cardiac functions. Gastric lavage, then charcoal (carbo medicalis) and sodium sulfate.

DIRECTIONS FOR USE: USE ONLY AS DIRECTED.

MIXING INSTRUCTIONS:

Pour the required quantity of **Merit[®] 200 SC** into the water while agitating.
Do not allow the **Merit[®] 200 SC** mixture to stand any length of time before using.
Do not use brackish water.

CROP/PEST	DOSAGE RATE	REMARKS
Aphids on roses	2 ml / 1 l water / 1 rose bush	Apply the mixture as a soil drench treatment around the base of roses at the first signs of infestation. Repeat treatment with 60 days interval.

CROP/PEST	DOSAGE RATE	REMARKS
Conifer aphid	Trees less than 2 m tall: 2 ml / 1 l water / 1 tree Trees between 2 and 2.5 m tall: 4 ml / 2 l water / 1 tree Trees between 2.5 and 3 m tall: 8 ml / 4 l water / 1 tree Trees taller than 3 m: 16 ml / 8 l water / 1 tree	Merit[®] 200 SC can be used as a preventative and curative treatment. To prevent die-back of trees because of conifer aphid infestation, yearly preventative treatments are recommended. <u>Preventative:</u> To prevent conifer infestations, treatment should commence during April-May. Apply the mixture as a soil drench treatment around the base of conifer trees. Repeat treatment 60 days after first application. <u>Curative:</u> Apply the mixture as a soil drench treatment around the base of conifer trees at the first signs of infestation. Repeat treatment 60 days after first application.
Mole crickets (<i>Gryllotalpa africana</i>)	875 ml / 250 l water / ha	Determine the size of the mole crickets first by drenching an area on the lawn where mole cricket activity is noted with a dishwashing liquid solution (50 ml dishwashing liquid / 10 l water). Merit[®] 200 SC will not control mole crickets larger than 15 mm effectively. Apply as an overall application at the first signs of infestation. Irrigate within 24 hours after application. Do not mow the lawn until after irrigation or rainfall. Repeat the application when necessary. For best results a preventative treatment can be applied at the end of October and repeated 60 days later to prevent mole cricket outbreaks.
Rove beetle (<i>Neosorus brevipennis</i>)	875 ml / 250 l water / ha	Apply as an overall application at the first signs of infestation. Irrigate within 24 hours after application. Do not mow the lawn until after irrigation or rainfall. A single application should give season-long control, but if not, repeat the application when necessary.
White grubs (Scarabaeidae)	875 ml / 250 l water / ha	Merit[®] 200 SC can be used as a preventative and curative treatment. <u>Preventative:</u> Preventative treatments during November, January and March are recommended for season long protection in areas where white grubs are known to be a pest. <u>Curative:</u> Inspections for white grub infestations should be carried out from November until April. Apply as an overall application at the first signs of infestation. Irrigate within 24 hours after application. Do not mow the lawn until after irrigation or rainfall. Repeat when necessary. NOTE: Only first and second instar larvae will be controlled effectively with Merit[®] 200 SC .
Ants	0.5 ml / 0.5 l water / nest entrance	For effective control of ants all nest entrances being actively used by ants must be treated. Apply 500 ml of the solution per active nest entrance. Pour the solution directly into or immediately around the nest entrance.

For any enquiry, contact Bayer - 0861 022 937 (08610BAYER). For poisoning emergencies only, Griffon Poison Information Centre may also be contacted - 082 446 8946.

© Bayer (Pty) Ltd. All unauthorised reproduction of this label is forbidden.

www.bayer.co.za



Merit[®] 200 SC

INSEKDODER

Reg. Nr. L8020, Wet Nr. 36 van 1947
Namibiese Reg. Nr. N-AR 0900
Botswana Reg. Nr. W130051 van Wet Nr. 18 van 1999

'n Sistemiese suspensiekonsentraat insekdoder vir die beheer van plantluise op rose, konifeer plantluise, molkrieke, dwaalkewers, eerste en tweede instar miswurms en miere.

AKTIEWE BESTANDEEL:

Imidaklopied (chloro-nikotiniel) 200 g/l

Insekdodergroepkode 4A

REGISTRASIEHOUER:

Bayer (Edms.) Bpk.
Reg. Nr. 1968/011192/07
Posbus 143, ISANDO, 1600
SUID-AFRIKA
TEL: (011) 921 5911

MERIT[®] is 'n geregistreerde handelsmerk van die Bayer Groep.



SKADELIK

WAARSKUWINGS:

Hanteer versigtig.
Giftig wanneer ingeasem, deur die vel opgeneem of deur die mond ingeneem word.
Giftig vir vis en wild.
Bewaar in 'n koel plek weg van voedsel en voer.
Hou buite bereik van kinders, oningeligte persone en diere.
In geval van vergiftiging ontbied 'n geneesheer en toon hierdie etiket aan hom.

VOORSORGMAATREËLS:

Verhoed inaseming van dampe.
Was besoedelde klere daaglik.
Was met seep en water na gebruik of toevallige velkontak.
Moenie eet, drink of rook tydens vermenging, toediening of voordat hande en gesig gewas is nie.
Maak spuitapparaat skoon na gebruik, raak ontslae van uitspoelwater waar dit nie gewasse, weiding, riviere en damme kan besoedel nie.
Spoel leë houder drie keer uit met 'n volume water gelyk aan ten minste een tiende van die houder en voeg die uitspoelwater by die inhoud van die spuittenk voordat van die houder op die voorgeskrewe metode ontslae geraak word.
Vernietig leë houder deur gate in te maak en plat te slaan. Moet vir geen ander doel weer gebruik nie.
Voorkom besoedeling van voedsel, voer, drinkwater en eetgerei.

SIMPTOME VAN VERGIFTIGING:

Apatiese toestand, verlaagde spierfunksie, asemhalingsversteurings en bewing en spierkrampe in gevalle van ernstige vergiftiging.

NOODHULP BEHANDELING:

Verwyder persoon van die oorsaak van vergiftiging (na 'n goed geventileerde omgewing), stel hom gerus en hou hom stil. Verwyder besoedelde klere en spoel die besmette liggaamsdele deeglik met baie seep en koue water af. Na oogkontak, spoel besmette oë uit met skoon water en kontak 'n geneesheer. Indien ingesluk, moenie braking induuseer nie. Spoel mond met water uit en kontak 'n geneesheer onmiddellik.

NOTA AAN GENEESHEER:

Behandel simptome. Monitor respiratoriese en kardiëse funksies. Maagspoeling, dan houtskool (carbo medicalis) en natriumsulfaat.

GEBRUIKSAANWYSINGS: GEBRUIK SLEGS SOOS AANGEDUI.

MENGINSTRUKSIES:

Voeg die nodige hoeveelheid **Merit[®] 200 SC** by die water terwyl dit geroer word. Moet nie die **Merit[®] 200 SC** mengsel laat oorsaak voor gebruik nie. Moet nie brakwater gebruik nie.

GEWAS/PLAAG	TOEDIENINGS-HOEVEELHEID	OPMERKINGS
Plantluise op rose	2 ml / 1 l water / 1 roosboom	Dien die mengsel toe as 'n grond deurdrenkings-behandeling rondom die stamme van roosbome wanneer die eerste plantluise opgemerk word. Herhaal behandeling met 60 dae intervalle.

GEWAS/PLAAG	TOEDIENINGS-HOEVEELHEID	OPMERKINGS
Konifeer plantluise	<u>Bome korter as 2 m in hoogte:</u> 2 ml / 1 l water / 1 boom <u>Bome tussen 2 en 2.5 m hoog:</u> 4 ml / 2 l water / 1 boom <u>Bome tussen 2.5 en 3 m hoog:</u> 8 ml / 4 l water / 1 boom <u>Bome hoër as 3 m in hoogte:</u> 16 ml / 8 l water / 1 boom	Merit[®] 200 SC kan as 'n voorkomende en korrektiewe behandeling gebruik word. Om die terug-sterf van bome te voorkom as gevolg van plantluisebesmetting, word jaarlikse voorkomende behandelings aanbeveel. <u>Voorkomend:</u> Om konifeer plantluise besmettings te voorkom, moet die behandeling gedurende April-Mei 'n aanvang neem. Dien die mengsel toe as 'n grond deurdrenkings-behandeling rondom die stamme van konifeerbome. Herhaal behandeling 60 dae na eerste toediening. <u>Kuratief:</u> Dien die mengsel toe as 'n grond deurdrenkings-behandeling rondom die stamme van konifeerbome wanneer die eerste plantluise opgemerk word. Herhaal behandeling 60 dae na eerste toediening.
Molkrieke (<i>Gryllotalpa africana</i>)	875 ml / 250 l water / ha	Bepaal die grootte van die molkrieke eers deur 'n area, waar molkriek aktiwiteit waargeneem is, te deurdrenk met 'n skottelgoedseep oplossing (50 ml skottelgoedseep / 10 l water). Molkrieke groter as 15 mm sal nie effektief deur Merit[®] 200 SC beheer word nie. Dien toe as 'n algehele bedekking wanneer die eerste tekens van besmetting waargeneem word. Besproei binne 24 uur na toediening. Moenie die gras sny voordat die gras besproei is of voordat dit gereën het nie. Herhaal die toediening wanneer nodig. Vir beste resultate word 'n voorkomende behandeling aanbeveel gedurende die einde van Oktober en 'n herhaling 60 dae later om molkriek uitbrake te voorkom.
Dwaalkewer (<i>Neosorius brevipennis</i>)	875 ml / 250 l water / ha	Dien toe as 'n algehele bedekking wanneer eerste tekens van besmetting waargeneem word. Besproei binne 24 uur na toediening. Moet nie die gras sny tot na besproeiing of reën nie. 'n Enkele toediening behoort seisoenlange beheer te verskaf, indien nie, herhaal toediening wanneer nodig.
White grubs (<i>Scarabaeidae</i>)	875 ml / 250 l water / ha	Merit[®] 200 SC kan as 'n voorkomende en korrektiewe behandeling gebruik word. <u>Voorkomend:</u> Voorkomende behandelings gedurende November, Januarie en Maart word aanbeveel vir seisoenlange beskerming in areas waar miswurms 'n probleem is. <u>Kuratief:</u> Inspeksies vir miswurm besmettings moet vanaf November tot April uitgevoer word. Dien toe as 'n algehele bedekking wanneer eerste tekens van besmetting waargeneem word. Besproei binne 24 uur na toediening. Moet nie die gras sny tot na besproeiing of reën nie. Herhaal wanneer nodig. NOTA: Slegs eerste en tweede instar larwes sal effektief deur Merit[®] 200 SC beheer word.
Miere	0.5 ml / 0.5 l water / nesingang	Vir effektiewe mierbeheer moet alle nesingange wat aktief deur miere gebruik word, behandel word. Dien 500 ml van die mengsel toe per aktiewe nesingang. Gooi die mengsel direk in of direk rondom die nesingang.

Vir enige navrae, skakel Bayer - 0861 022 937 (08610BAYER). Slegs vir vergiftigingsnoodgevallen kan Griffon Gif Inligtingssentrum ook gekontak word - 082 446 8946.

© Bayer (Edms.) Bpk. Alle ongemagtigde kopiëring van die etiket is verbode.

www.bayeres.co.za

80967594B / 1214

Bayer